

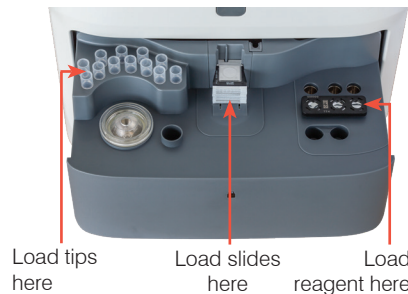
Quick Reference Guide

Storage and handling requirements

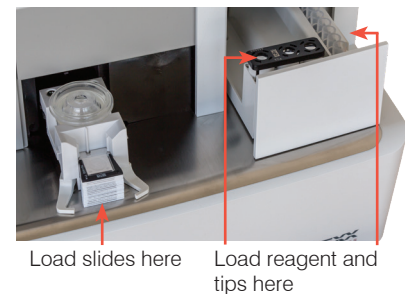
- Store in the refrigerator. Do not freeze.
- No warming required—run directly from the refrigerator.
- SDMA and total T₄ slides and reagent can be stored in their pouch at room temperature for up to 8 hours. After 8 hours, store any unused materials in the refrigerator.
- Recommended sample volume:
 - Whole blood: 600–800 µL
 - Serum/plasma: 65 µL (300 µL if running with other slides)

Just load and go!

Catalyst One*



Catalyst Dx*



Frequently asked questions

Question	Answer
Do I need to run anything with the SDMA or total T ₄ slide(s)?	Whether you're running SDMA with or without total T ₄ (TT ₄), you must run the slide(s) with the accompanying reagent. All components must be run together for each sample run and then discarded.
What sample types can be run on the SDMA or TT ₄ test(s)?	Compatible sample types include serum, lithium heparin plasma, and whole blood using the Catalyst* Lithium Heparin Whole Blood Separator.
Can I run previously frozen samples on the SDMA or TT ₄ test(s)?	No, frozen samples should not be used when running the Catalyst SDMA Test or the Catalyst SDMA and Total T ₄ Kit.
Which species have been validated for the SDMA or TT ₄ test(s) and what are the numerical results?	SDMA canine and feline: 0–100 µg/dL TT ₄ canine: 0.5–10.0 µg/dL (6.4–128.7 nmol/L) TT ₄ feline: 0.5–20.0 µg/dL (6.4–257.4 nmol/L)
Can SDMA or TT ₄ be run with other slides?	Catalyst One Chemistry Analyzer: Yes! The test(s) can be run alone or with other slides as part of a comprehensive patient profile. For example, you could run a Catalyst* Lyte 4 CLIP, a Catalyst* Chem 17 CLIP, a Catalyst* Total T ₄ Test, and a Catalyst* SDMA Test with one patient sample. Catalyst Dx Chemistry Analyzer: SDMA can be run with all chemistry/electrolyte slides and/or CLIPs except phenobarbital and CRP. Because they share a reagent, total T ₄ can only be combined with SDMA when part of the Catalyst SDMA and Total T ₄ Kit.
When running with other slides, should the SDMA or TT ₄ test(s) be loaded in a particular order?	Catalyst One: When running with other chemistry slides, the SDMA or TT ₄ slide(s) can be loaded in any order. If running with electrolyte slides, load the electrolyte slides first. For the quickest time to results, the recommended load order is Lyte 4 CLIP, chemistry CLIP (e.g., Chem 17, Chem 10, etc.), SDMA, TT ₄ , with additional slides on top. Catalyst Dx: If there are 18 slides or fewer in the run, the SDMA or TT ₄ slide(s) can be loaded in any order (if running with electrolyte slides, load the electrolyte slides first). For runs containing more than 18 slides, load the SDMA or TT ₄ slide(s) in the first 18 slides (if running with electrolyte slides, load the electrolyte slides first). For the quickest time to results, the recommended load order is Lyte 4 CLIP, chemistry CLIP (e.g., Chem 17, Chem 10, etc.), SDMA, TT ₄ , with additional slides on top. Note: Be sure to load the drawer with pipette tips before every run.
What is the run time for the SDMA or TT ₄ test(s)?	SDMA results are available ~10 minutes after the start of the run. TT ₄ results are available ~15 minutes after the start of the run.
Is it okay to dilute samples that are undergoing SDMA or TT ₄ testing?	IDEXX does not support the use of diluted samples when running the Catalyst SDMA Test or Catalyst Total T ₄ Test.
How often can SDMA or TT ₄ tests be left at room temperature and then returned to the refrigerator?	Once at room temperature, SDMA or TT ₄ tests can be returned to the refrigerator up to 5 times as long as the foil pouch is unopened.
What if the SDMA or TT ₄ tests are accidentally frozen?	Any tests suspected of being frozen should be discarded.
Should I run quality control for SDMA or TT ₄ ?	Quality control is not required but is available through IDEXX Technical Support.
Where can I go for more information about SDMA, such as assessing my SDMA result?	For more information, visit idexx.com/SDMA .